

Clients Name: S&S HIRE Machine Make & Model: DYNAPAC CC900 Serial No: A030351 Asset/Rego No: N/A Quick Hitch (if Fitted): N/A Capacity Limits: N/A Certification of operator required: Yes= ROLLER		RA No: 131460121 Date of assessment: 27 JANUARY 2021 Equipment Type: TWIN SMOOTH DRUM ROLLER Engine Hours/Km's: 3.1 FRONT & REAR SPRAYERS FITTED
---	--	---

Is the plant designed to perform the task as outlined in the scope? Yes No

Has the plant been modified from the original condition? Yes No

All identified action items closed out/addressed? Yes No

Is the plant safe to operate? Yes No

STEP 1: Likelihood of Occurrence	STEP 2: Severity of Result
1. Expected To Occur (once per week)	A Fatality
2. Common (once per month)	B Permanent Disability
3. Sometimes (once per year)	C Lost Time Injury (LTI)
4. Rarely (once in < 20 years)	D Medical Treatment / Damage
5. Highly Unlikely (once in > 20 years)	E First Aid Injury

STEP 3:	A	B	C	D	E
1	H	H	H	M	M
2	H	H	M	M	L
3	H	M	M	L	L
4	M	M	L	L	L
5	M	L	L	L	L

STEP 4: Hazard Risk Assessment

H = High Risk (INTOLERABLE, significant and urgent actions required- Immediate Action)
M = Medium Risk (ALARP, reduce risk to As Low As Reasonably Practicable).
L = Low Risk (TOLERABLE, monitor and manage risk).

Brent Woll



General Notes

The Owner/Operator of the above Plant/Equipment should perform an inspection at regular intervals, that all procedures and control methods are maintained to an acceptable level where the level of risk to any person is increased. In particular when any alteration or modification is made to the Plant/Equipment, a review of both Control Methods and Documentation should be made.

A Plant Risk Assessment should be performed at regular intervals with a minimum of once per year.

Confidentiality

Information obtained from the owner/ operator in the course of producing this report will be treated as confidential. It will not be used for any purpose other than for the production of this report.

Disclaimer

This report has been prepared by Viper Safety and Training P/L for the purpose of determining compliance to the National OH&S regulations of 2017.

The contents of this report are intended only for use by the owner/operator. Whilst every effort has been made by Viper Safety and Training P/L to ensure the accuracy of this report Viper Safety and Training P/L will not be held responsible and extends no warranties as to the suitability of such information or for the consequence of its use. Likewise, Viper Safety and Training P/L will not be held responsible for actions taken by third parties as a result of information contained in this report. This report is not to be modified in any way unless done so by Viper Safety & Training Pty Ltd.

Viper Safety & Training Pty Ltd will not be held accountable for any damage caused by operator error and/or mechanical/structural failures.

It is the duty of the operator to read and understand the operators manual.

Brent Woll
Assessor/Trainer

**ALL HAZARDS IDENTIFIED IN THIS DOCUMENT MUST BE RECTIFIED WITHIN 21 DAYS OF DATE LISTED ON THE FRONT OF THIS FORM
IF FAULTS NOT RECTIFIED IN 21 DAYS THIS DOCUMENT BECOMES NULL AND VOID**

THIS RISK ASSESSMENT DOCUMENT IS VALID FOR TWELVE (12) MONTHS FROM THE DATE OF ISSUE



Hazard Type	Control Methods in Place	Yes / No	NA	Comments / Recommended Improvements	Projected Risk Score
ENTANGLEMENT Can anyone's, hair, clothing, gloves, necktie, jewellery, cleaning brushes, rags or other materials become entangled with moving parts of the plant, or materials in motion?	Manufacturers Warning Decals Readable	Y		All decals in operators cab	M
	Guards installed	Y			
	Warning Decals for Personal (i.e .loose clothing etc)	Y			
	Engine covers fitted	Y			
CRUSHING Can a person be crushed due to: ♦ Uncontrolled or unexpected movement of the plant or its load?	Neutral start switch fitted	Y			M
	Reversing/travel alarm	Y			
	Crush zone warning decal	Y			
	Amber Flashing Beacon	Y			
	Pedals-Non slip surface	Y			
	Controls have appropriate knobs	Y			
	Reversing camera		N/A		
	Rear view mirror	Y			
	Control pod safety switch operational		N/A		
	Rear Swing Warning Decal or Swing Lights fitted		N/A		
	Machine may suddenly reverse warning decal fitted	Y			
	Service brake operational		n/a		
	Parking brake operational	Y			
Battery Isolator fitted	Y				
Starter isolator fitted		N/A			
Emergency stops (if fitted)	Y		X1		
Rops decal fitted to rops	Y				
Rops approved structure	Y				
Fops approved structure		N/A			
Tops/Cops approved structure		N/A			
Manufacturers designed cab		N/A			
Emergency Exit Identified		N/A			
♦ The plant tipping or rolling over?					M



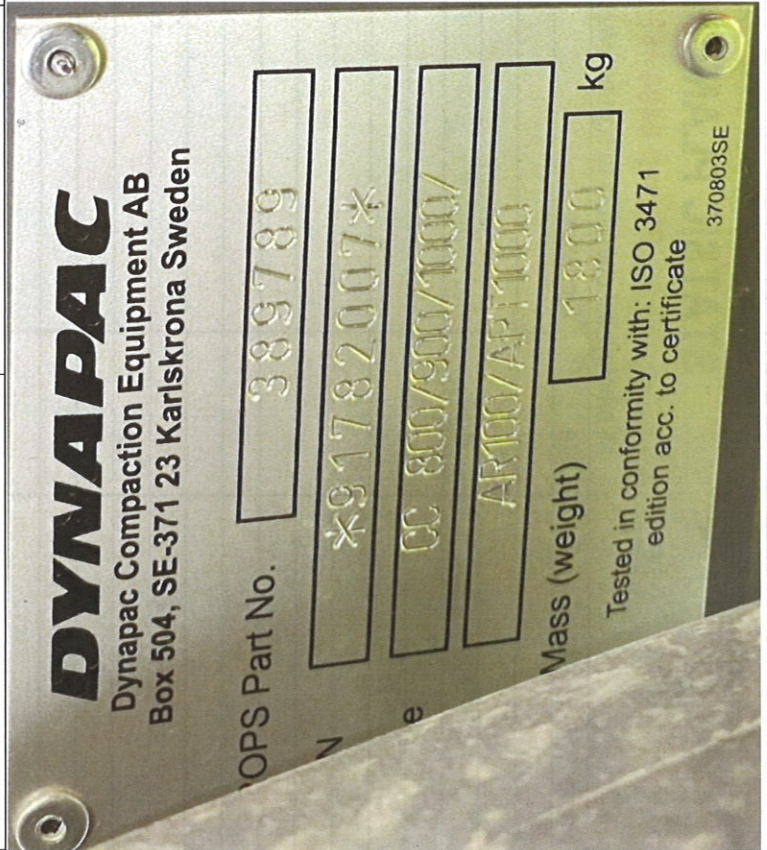
Hazard Type	Control Methods in Place	Yes / No	NA	Comments / Recommended Improvements	Projected Risk Score
<ul style="list-style-type: none"> Being thrown off or under the plant? WARNING: The seatbelt on this machine may be out of date. Please check operator's manual for correct guidance and replace seatbelt if necessary. (3 year limit on most machines) 	Emergency Exit vandal cover removed prior to operating. Warning Decal Fitted Seat belt fitted Door fitted Seat belt must be worn, warning decal fitted Operator Cabin fully enclosed Operator Area open	Y Y Y	N/A N/A N/A		L
CUT/STAB/PUNCTURE Can anyone be cut, stabbed or punctured due to: <ul style="list-style-type: none"> Coming into contact with sharp or flying objects? Coming into contact with moving parts of the plant during testing, inspection, operation, maintenance, cleaning or repair of the plant? 	Guarding No visible signs of sharp objects <ul style="list-style-type: none"> Safe work procedures in place Trained persons only Tag out procedures in place 	Y N N		 To be implemented by owner/hirer To be implemented by owner/hirer	L
<ul style="list-style-type: none"> The plant, parts of the plant or work pieces disintegrating? Work pieces being ejected? The mobility of the plant? Uncontrolled or unexpected movement of the plant? 	As above As above As above As above	N N N N		 To be implemented by owner/hirer To be implemented by owner/hirer To be implemented by owner/hirer To be implemented by owner/hirer	L
SHEARING Can anyone's body parts be sheared between any two parts of the plant, or between a part of the plant and a work piece or structure?	<ul style="list-style-type: none"> Safe work procedures in place Traffic management in place Supervision in place 	N N		To be implemented by owner/hirer To be implemented by owner/hirer	L
FRICITION Can anyone be burnt due to contact with moving parts or surfaces of the plant, or material handled by the plant?	As above	N		To be implemented by owner/hirer	L
STRIKING Can anyone be struck by moving objects due to: <ul style="list-style-type: none"> Uncontrolled or unexpected movement of the plant? 	<ul style="list-style-type: none"> Safe work procedures in place Traffic management in place Supervision in place 	N		To be implemented by owner/hirer	M

Hazard Type	Control Methods in Place	Yes / No	NA	Comments / Recommended Improvements	Projected Risk Score
<ul style="list-style-type: none"> ◆ The plant, parts of the plant or work pieces disintegrating? ◆ Work pieces being ejected? 	As above	N		To be implemented by owner/hirer	L
	Guarding	Y			
	Keep clear warning decals Keeper pins correct type	Y Y			
<ul style="list-style-type: none"> ◆ Mobility of the plant? 	Glass safe operational condition		N/A		M
	Reversing / travel alarm	Y			
	Amber flashing beacon	Y			
	Reversing decal fitted	Y			
	Brake lights		N/A		
	Warning horn	Y			
	Indicators/Hazard Lights	Y			
	Head/Tail Lights	Y			
	Front and/or Rear work lights	Y			
	Leakage	Y			
High Pressure fluid Can anyone come into contact with fluid under pressure due to plant failure or misuse	All pipe clamps fitted	Y			L
	High pressure warning decals	Y			
	No return valve fitted		N/A		
	(Craning/lifting valves fitted)				
ELECTRICAL Can anyone be injured by electrical shock or burn due to: <ul style="list-style-type: none"> ◆ The plant contacting live electrical conductors? ◆ Damaged or poorly maintained electrical leads and cables? ◆ Damaged electrical switches? ◆ Lack of isolation procedures? EXPLOSION Can anyone be injured by explosion of gasses, vapours, liquids, dusts or other substances, triggered by the operation of the plant or by material handled by the plant?	Electrical wire / overhead wires / obstructions decals fitted	Y		Addressed by JSA. (no go zone)	L
	Electrical cables and/or leads to be maintained to OEM specifications	Y			
	Electrical switches to be maintained to OEM specifications	Y			
	Battery isolator fitted	Y			



Hazard Type	Control Methods in Place	Yes / No	NA	Comments / Recommended Improvements	Projected Risk Score	
SLIP/TRIP/FALL Can anyone using the plant, or in the vicinity of the plant, slip, trip or fall due to: ◆ Uneven or slippery work surfaces? ◆ Poor housekeeping, eg. Debris in the vicinity of the plant, spillage not cleaned up? ◆ 3 points of contact warning decal fitted ◆ Lack of a proper work platform? ◆ Lack of proper stairs or ladders? ◆ Lack of guardrails or suitable edge protection? ◆ Poor floor or walking surfaces, such as the lack of a slip resistant surface? ◆ Steep walking surfaces?	Non slip surface	Y	N/A		L	
	Decal fitted	Y			L	
	Proper work platform	Y			L	
	Proper stairs or ladders	Y			L	
	Guardrails or suitable edge protection		N/A		L	
	Non slip surface	Y			L	
			Y			
	ERGONOMIC Can anyone be injured due to: ◆ Poorly designed seating? ◆ Constrained body effort	Seat in safe usable condition	Y			
		Operational control levers & pedals in operator reach	Y			L
		Seat adjustment controls operational	Y			
Operators controls identified		Y			L	
SUFFOCATION Can anyone be suffocated due to lack of oxygen or atmospheric contamination, refer to the Confined Spaces Regulations?	All labels are readable	Y				
	Engine fumes not excessive at high idle	Y			L	
	Door/window seals maintained		N/A			
	High mounted exhaust not easily accessible		N/A			
TEMPERATURE / FIRE Can anyone come into contact with objects at high temperature?	Hot surface warning decal	Y			L	
	Fire protection supplied	Y				
	Fire suppression system (if fitted)		n/a	TAGGED JAN 2021		
	Ventilation	Y			L	
THERMAL COMFORT Can anyone suffer ill health due to extreme temperature or change of weather?	Air conditioning		N/A			
	High noise levels	Y				

Hazard Type	Control Methods in Place	Yes / No	NA	Comments / Recommended Improvements	Projected Risk Score
Can anyone suffer ill health or hearing loss due to exposure to high noise levels?	Hearing protection supplied	N		To be implemented by owner/hirer	L
	Hearing protection warning decal	Y			
DOCUMENTATION	CAB TYPE:			OPEN	
	Operator's Manual	N		To be implemented by owner/hirer Must Be In Cab At All Times	L
	Attachment instructions	N		To be implemented by owner/hirer Must Be In Cab At All Times	
	Plant daily checklist in place	N		To be implemented by owner/hirer Must Be In Cab At All Times	
Maintenance records up to date	N		To be implemented by owner/hirer Must Be In Cab At All Times		





SAFETY



CONTROL



RISK

All employees/ operators to sign below to acknowledge they have read and understood this document.

Name	Date	Signature	Name	Date	Signature